



Whilst every effort is made to give a fair description, the accuracy of these particulars is not guaranteed, neither do they constitute an offer or contract.

MATHESONS ESTATE AGENTS have not tested any apparatus, equipment, fitting or services and so cannot verify that they are in working order. The buyer is advised to obtain verification from their solicitor or surveyor. Measurements are correct to within +/-6 A sonic tape is used. None of the statements contained in these particulars or any of our properties are to be relied upon as a representation of fact.

166 Manor Park Road
Harlesden
London
NW10 4JT
T: 020 8965 2250
E: sales@mathesonsestates.com
www.mathesonsestates.com



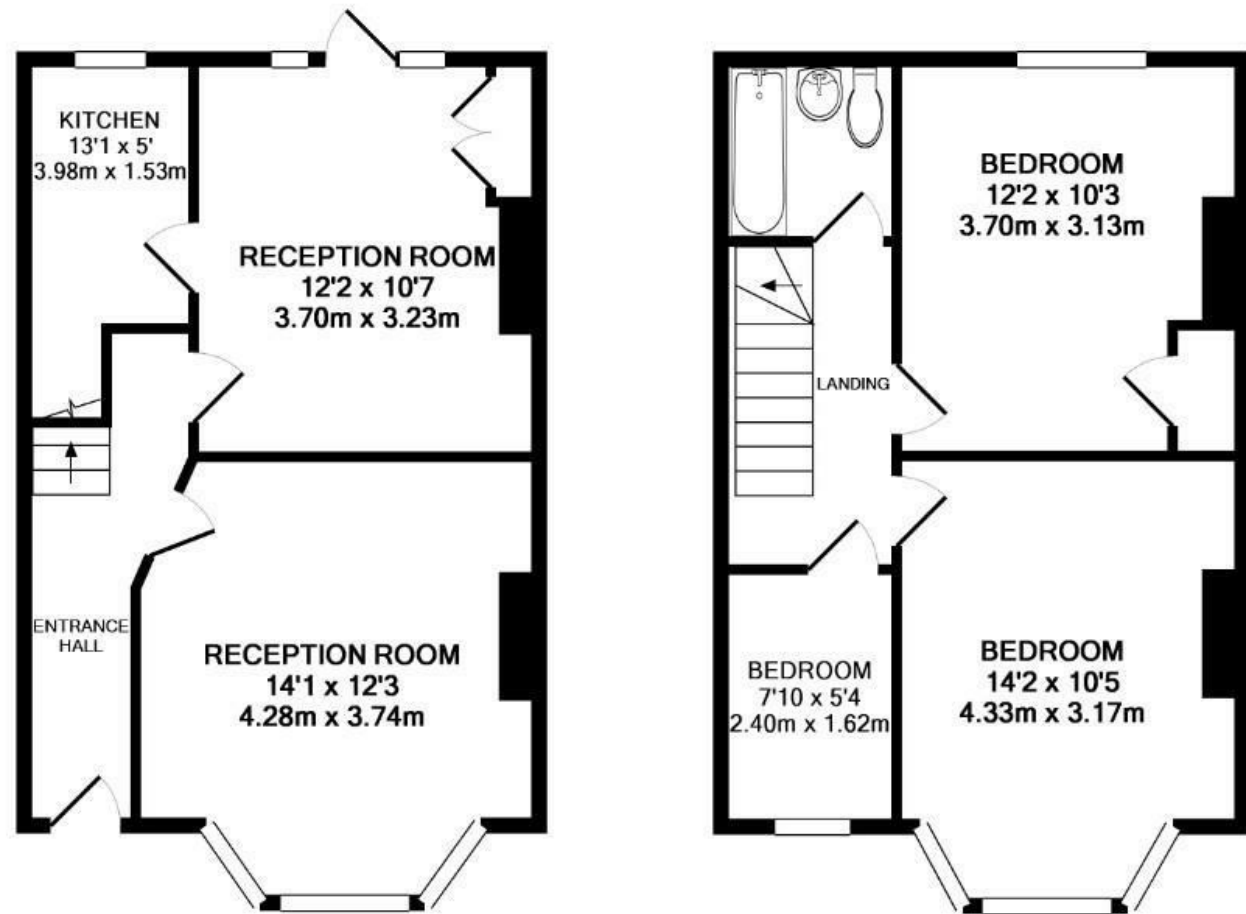
Crouch Road, London, NW10 8HR Guide Price £450,000 Freehold



KEY FEATURES:

- Three bed house
- Two receptions
- Garden
- In need of modernisation
- Priced to sell
- Freehold
- Competitively priced
- No chain
- ideal Investors
- Must be seen

A fabulous three bedroom period bay fronted terraced home of generous proportions and requiring complete modernisation but offering a fantastic opportunity for a developer or someone wishing to create a large family home in one of London's fastest growing areas. This fabulous Victorian house can be bought for roughly the price of a two bedroom flat in the area and is extremely rare to the open market. Property of this nature is rare to the open market and early viewing is considered essential, surely this is the perfect project for a young family or builders looking to invest.



GROUND FLOOR
APPROX. FLOOR
AREA 376 SQ.FT.
(35.0 SQ.M.)

1ST FLOOR
APPROX. FLOOR
AREA 381 SQ.FT.
(35.4 SQ.M.)

CROUCH ROAD, LONDON, NW10 8HR
TOTAL APPROX. FLOOR AREA 758 SQ.FT. (70.4 SQ.M.)
Measurements are approximate. Not to scale. Illustrative purposes only
Made with Metropix ©2018

